



**ecolibrium**

## ANNUAL REPORT 2025



Stichting  
Holanda  
Brasil





# Who We Are

Ecolibrium is a socio-environmental initiative based in Nova Friburgo, Brazil, dedicated to developing practical and scalable solutions for regenerative living.

Created to expand the impact of Eco Caminhos, Ecolibrium responds to a growing demand for hands-on education in sustainability, agroforestry, and natural building. It connects knowledge with practice, enabling people to reconnect with nature while restoring ecosystems and strengthening communities.

Operating across both rural and urban contexts, Ecolibrium integrates environmental regeneration with social development, building bridges between restoring land and creating opportunities for people.

## ► Vision

To create conscious regions where agriculture, communities, and daily life exist in harmony with nature, restoring ecosystems while strengthening resilient local economies.

## ► Mission

To educate and inspire a local and global audience through hands-on learning on permaculture, agroforestry, and natural building, empowering individuals and communities to implement regenerative solutions.



# 2025 at a Glance

**2025 marked a decisive transition from vision to reality.**

## Key highlights:

- ▶ First operational use of the Ecolibrium Space
- ▶ Strong progress in construction and infrastructure
- ▶ Expansion of international education programs
- ▶ Continued innovation in agroforestry systems
- ▶ Implementation of a clear Theory of Change
- ▶ Strengthening of governance and institutional structure

At the same time, Ecolibrium expanded its social impact through education programs in both rural and urban contexts, reinforcing the connection between environmental regeneration and human development.





# Ecolibrium Space - A Living Hub

At the heart of the initiative is the Ecolibrium Space, a 1,200m<sup>2</sup> natural building designed as a multifunctional center for education, training, and community development.

The space integrates classrooms, accommodation, maker spaces, and community areas into one coherent learning environment. More than infrastructure, it is a living system where participants learn by doing and experience regenerative living in practice.





# Construction Progress

## Phase 1 – From Concept to Use

In 2025, Phase 1 reached a major milestone:

- ▶ Green roof completed
- ▶ Water systems and storage installed
- ▶ Kitchen and public bathrooms nearing completion
- ▶ First five bedrooms finalized

In November 2025, the space became operational for the first time, hosting volunteers, students, and international groups.



## Phase 2 – Preparing for Scale

Key groundwork was completed:

- ▶ Nearly 300 truckloads of earth moved and reused
- ▶ Infrastructure prepared for fishponds, sports field, and parking
- ▶ Retaining wall completed
- ▶ Structural engineering finalized for expansion

This phase lays the foundation for scaling both capacity and impact.





## Living Classroom

Ecolibrium functions as a living classroom where learning is experiential and directly connected to real-world application.

### In 2025:

- ▶ 3 trainees trained in natural building
- ▶ 30+ architects and engineers engaged
- ▶ 300+ volunteers participated
- ▶ Schools, youth groups, and families involved



## Mais Caminhos - Empowering Youth

Mais Caminhos extends Ecolibrium's impact into the urban context of Rio de Janeiro.

- ▶ 45% growth in student enrollment
- ▶ 84% attainment rate
- ▶ 84% retention rate

## Expansion to five English levels

Students are entering the job market, receiving scholarships, and preparing for university, supported by mentorship and vocational development.



## Education & Global Partnerships

Ecolibrium strengthened its international position through partnerships with:

- ▶ St. Mary's University
- ▶ Texas A&M University
- ▶ Swansea University
- ▶ Thomas More
- ▶ Van Hall Larenstein
- ▶ Avans University
- ▶ Wageningen University



## Impact

- ▶ 45 international students
- ▶ Structured Study Abroad programs
- ▶ Integration of academic and practical learning



# Agroforestry & Regenerative Impact

In collaboration with Eco Caminhos, Ecolibrium continues to develop regenerative agroforestry systems centered on specialty coffee production.

- ▶ First harvest of organic coffee
- ▶ Proof of economic viability
- ▶ Focus on soil regeneration and biodiversity





# Theory of Change

Since 2024, Ecolibrium has applied a Theory of Change approach to better understand the needs of the local community and define how it can create the most meaningful impact.

At its core, Ecolibrium addresses the growing disconnection between people and nature where individuals reconnect through hands-on, practical experiences.

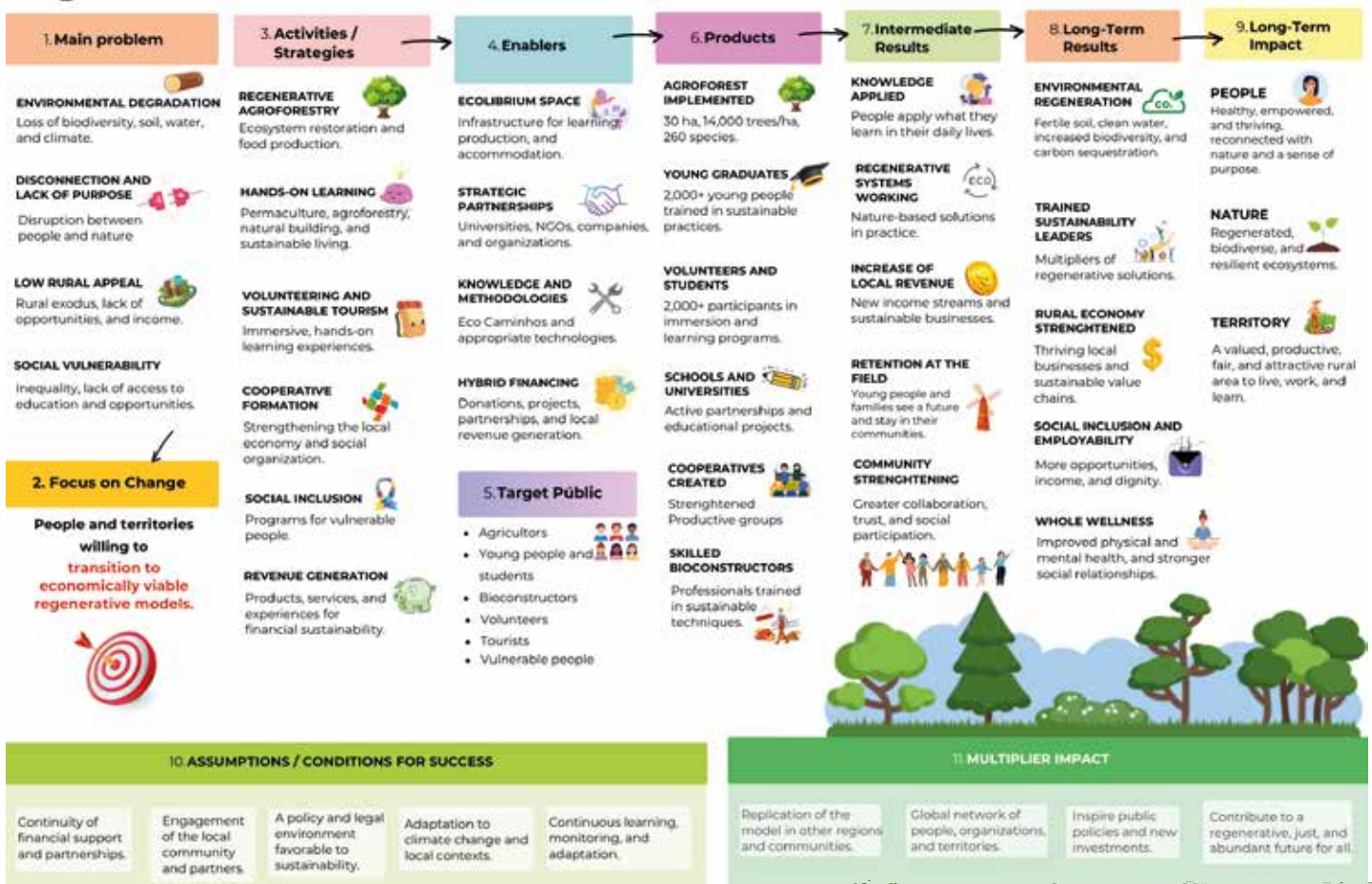
We believe this reconnection is not optional, but fundamental. Without it, the future of both humanity and the natural world is at risk.

This leads to:

- ▶ Practical skills and knowledge
- ▶ Regenerative systems in practice
- ▶ Increased income opportunities
- ▶ Stronger communities



*These are the UN Sustainable Development Goals that guide the Theory of Change at Ecolibrium.*





# Governance & Institutional Development

In December 2025 we had elections and a new board of directors was selected. There were also made several adjustments to the statute of our association that reflect better the reality of today's operation. We also invited several advisors to our council board with some highly qualified and recognized people.

## Board of Directors

**Bart Bijen** - President

**Izabel Cristina Costa de Sousa** - Vice-President

**Hilaine Teresa Fernandez Higuera** - Administrative  
Financial Director

**Robson Soares Lessa** - Director of Communication  
and Relations

## Advisory and Fiscal Council

**Ilona Szabó de Carvalho** - Strategic Advisor

**Leticia Costa Fores** - Legal advisor

**Fausto Amadgi** - Strategic advisor

**Yanae Melo da Costa** - Legal advisor

**Carlos Augusto Tavares da Silva Azevedo** -  
Financial advisor



# Financial Report 2025



As a growing association, we are committed to full transparency and pleased to share our annual financial results.

## Financial Summary for 2025

### Total Revenue:

€ 120.006,69

### Total Expenses:

€ 95.680,59

### Operating Result (Surplus):

€ 24.326,10

### Opening Cash Balance (01/01/2025):

€ 9.775,08

### Cash Balance (31/12/2025):

€ 27.378,23

## Income Statement

Source of Revenue	Amount (€)
Donation via Wilde Ganzen	€ 52.214,38
Stichting Avante Educação Brasil	€ 65.767,18
Other	€ 853,53
Account income	€ 1.171,60
<b>Total Income</b>	<b>€ 120.006,69</b>

## Investments and Co-financed

### Construction

In 2025, the majority of expenditures were directed toward the construction of the Ecolibrium Space. This development is financed through a hybrid model combining international donations with locally generated income from Colmeia Brasil.

In 2025, Colmeia Brasil contributed R\$ 209.882,44.

## Construction – Phase 1 of Ecolibrium 2025

Stage	Ecolibrium (€)	Colmeia (€)	Amount (€)
Administrative Expenses and Taxes	€ 314,12	€ 1.086,71	€ 1.400,82
Electrical Installations	€ 3.572,56	€ 6.421,86	€ 9.994,42
Finishes	€ 3.694,88	€ 6.777,60	€ 10.472,48
Labor	€ 8.414,86	€ 3.723,60	€ 12.138,46
Doors and Windows	€ 4.772,13	€ 6.830,05	€ 11.602,18
Plumbing Materials	€ 2.596,45	€ 2.436,40	€ 5.032,85
Structure and Roof	€ 9.196,84	€ 8.613,68	€ 17.810,52
<b>Construction Subtotal</b>	<b>€ 32.561,84</b>	<b>€ 35.889,90</b>	<b>€ 68.451,74</b>

Phase 1 exceeded its original budget due to the addition of two rooms originally planned for Phase 3, investments to make the space operational from November 2025 on, and unforeseen costs. These additional costs were fully covered by Colmeia Brasil, with Colmeia contributing slightly more than Associação Ecolibrium in 2025 for this construction phase.

### Construction - Phase 2 of Ecolibrium 2025

Category	Amount (€)
Subtotal Materials	€ 23.743,66
Labor	€ 16.302,33
Organizational/Management Costs	€ 6.668,97
Unforeseen expenses	€ 198,41
<b>Construction Subtotal</b>	<b>€ 46.913,38</b>

### Mais Caminhos Project

Category	Amount (€)
Holiday Camps	€ 1.074,91
English Program	€ 6.197,55
Internships and scholarships	€ 1.087,56
Admin expenses	€ 1.390,06
General Expenses & Material	€ 978,80
<b>Mais Caminhos Subtotal</b>	<b>€ 10.728,88</b>

### Administrative and Legal Expenses

Category	Amount (€)
Accounting	€ 129,79
Taxes	€ 2.188,78
Bank Fees	€ 140,25
General	€ 234,17
<b>Administrative Subtotal</b>	<b>€ 2.692,99</b>

### Donations to Third Parties

Beneficiary	Amount (€)
Tiago's School (High School)	€ 1.757,50
Support to Davi & Tiago	€ 1.026,00
<b>Donations Subtotal</b>	<b>€ 2.783,50</b>



# Balance Sheet - December 31, 2025



## Assets

Account	Amount (€)
Cash and Banks	€ 27.378,23
Fixed Assets (land/building)	€ 134.783,90
Financial Investments	€ 171,26
<b>Total Assets</b>	<b>€ 162.333,38</b>

## Liabilities

Account	Amount (€)
Labor Obligations	€ 246,97
<b>Total Liabilities</b>	<b>€ 246,97</b>

## Fundraising Progress - Phases 1 & 2 Ecolibrium

The figures below represent all funds raised from 2023 until April 2026 for the construction of the Ecolibrium multifunctional compound, along with the current status of funds secured and still required.

Project costs increased due to design improvements, expansion of later phases, additional space, and inflation in Brazil.

All funds are raised through Wilde Ganzen and Stichting Avante Educação Brasil and transferred to Brazil.

### Fundraising Progress - Phases 1 & 2 Ecolibrium

Organization	Euros	Reais
Wilde Ganzen	€ 73.108	R\$ 445.958,80
Aid2Many	€ 31.246	R\$ 190.600,60
Colmeia Brasil	€ 50.000	R\$ 305.000,00
Anonymous Foundations	€ 75.500	R\$ 460.550,00
Stichting Holanda Brasil	€ 11.000	R\$ 67.100,00
IAKP Foundation	€ 3.000	R\$ 18.300,00
Gomes Stiehle Family	€ 10.000	R\$ 61.000,00
Stichting Meester Tillman	€ 4.000	R\$ 24.400,00
Stichting Blanche Dael	€ 5.000	R\$ 30.500,00
KCE	€ 500	R\$ 3.050,00
<b>Total</b>	<b>€ 263.354</b>	<b>R\$ 1.606.459,40</b>

### Funding Needs

Phase	Costs	Donations	Funding Needed
Phase I	€ 134.085	€ 134.085	€ -
Phase II	€ 220.000	€ 129.269	€ 90.731
Phase III	€ 280.000	€ -	€ 280.000
<b>Total</b>	<b>€ 634.085</b>	<b>€ 263.354</b>	<b>€ 370.731</b>

# Key Supporters

- ▶ **Wilde Ganzen**
- ▶ **Aid2Many**
- ▶ **Colmeia Brasil**
- ▶ **Stichting Holanda Brasil**
- ▶ **IAKP Foundation**
- ▶ **Família Gomes Stiehle**
- ▶ **Stichting Blanche Dael**
- ▶ **KCE**
- ▶ **Anonymous donors**

# Key Priorities for 2026

## Construction & Infrastructure

- ▶ Continue Phase 2 construction
- ▶ Complete fundraising for Phase 2
- ▶ Initiate fundraising for Phase 3

## Education & Programs

- ▶ Expand educational programs
- ▶ Further develop and formalize the educational methodology
- ▶ Initiate coffee processing operations as a learning and production activity

## Partnerships & Community

- ▶ Strengthen relationships with the local community
- ▶ Develop partnerships with educational and social institutions
- ▶ Strengthen local and regional partnerships

## Governance & Institutional Development

- ▶ Further develop and strengthen internal governance structures
- ▶ Obtain state-level recognition
- ▶ Request OSCIP status



Contato

✉ [b.bijen@caminhosbrasil.com](mailto:b.bijen@caminhosbrasil.com)

☎ +55 22 99751.2422

